

Gymna Ultrasound compact

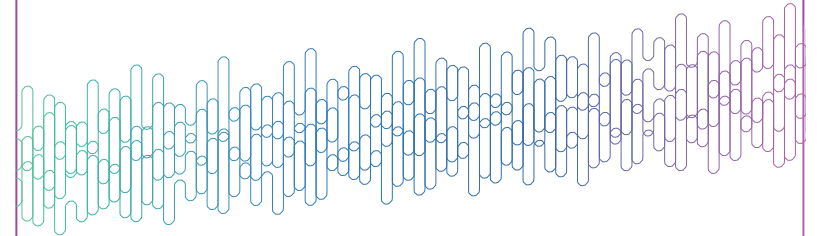
Smart therapeutic ultrasound at hand



Gymna Ultrasound compact

The Gymna Ultrasound compact is a small and easy to use device. It operates on mains power or on the internal rechargeable battery and is for use in and outside the physiotherapy practice.

Designed with a high quality capacitive 7-inch touchscreen, the user-interface is clear and concise. All functions can be found easily, the device is self-explanatory.



Therapeutic ultrasound and its main goals

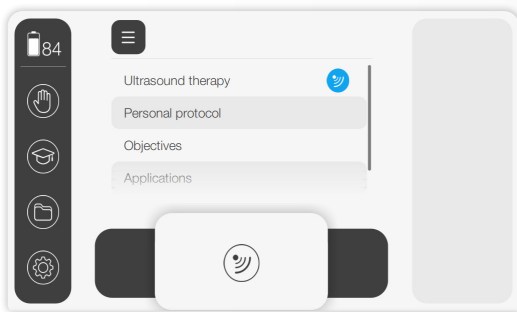
Therapeutic ultrasound is the transfer of mechanical energy by the use of sound waves to support optimal treatment of musculoskeletal disorders such as soft tissue injuries. It is mainly used for:

- Pain relief
- Muscle relaxation
- Connective tissue extensibility Improvement
- Cellular effects

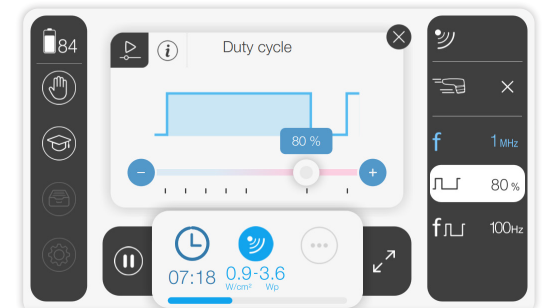
Superior quality capacitive touchscreen

The combination of the large 7-inch touchscreen and the user-friendly software allows:

A clear and concise user interface; legible from any angle.



All functions to be integrated into the screen.



A unique virtual dial to set ultrasound intensity and treatment time.



The glass screen covers the whole device making it:
- Easy to clean
- Disinfectable with alcohol



New! DynamUS

DynamUS, a feature unique in the field of therapeutic ultrasound. DynamUS is Gymna's motion speed detection feature that guides you in your treatments. It helps you keeping the right dynamic movement pace.

This user-friendly patient safety function monitors the ultrasound head's motion on the patient's skin and warns if its pace is too slow or too fast. The feedback is visible through the orange coloured LED on the ultrasound head:



Too slow:

Risk for hot spots and as a result possible risk for internal tissue damage



*Orange LED will light continuously
Move the head a little faster
maintaining skin contact*



Too fast :

Ineffective treatment and as a result no progress in treatment



*Orange LED will blink
Move the head a little slower
maintaining skin contact.*





Build-in battery

The long battery life of the rechargeable build-in battery brings you freedom to use the device in every environment even if no power inlet is available.



Gymna Standard ultrasound heads

Optimal performance on every device. Each Gymna ultrasound head acts as a precision instrument and works exactly according to its stored ultrasound beam characteristics. This automatic recognition and pairing with our devices gives you the flexibility to interchange our ultrasound heads on every Gymna Ultrasound compact device.



Ultrasound head holder for a secure head storage

The anti-slip ultrasound head holder allows the ultrasound head of choice to be stored in a freestanding position. The holder is equipped with magnets to safely lock the ultrasound head in the holder.



Dual connections

The Gymna Ultrasound compact allows simultaneous connection of two ultrasound heads and you can easily switch between them. This saves time and diminishes cable wear and tear. Your patients and their pathologies determine the ultrasound head that is needed. The choice is yours.

Gymna Ultrasound head available options

The Gymna Ultrasound compact standard configuration contains a large sized ultrasound head. A small ultrasound head can be ordered as an option.

**Small
ultrasound head**
Optional

**Large
ultrasound head**
Standard packaging



Gymna Mobile Fit

This cleverly designed multi-purpose mobile is sturdy but lightweight and helps you in your daily practice. Equipped with lockable swivel wheels, a drawer, a storage tray and a functional handpiece support for your ultrasound heads to be accessible for treatments at all times. The outstanding cable management solution helps avoiding the risk of cables hanging on the floor.



Technical specifications

Unit dimensions (w x d x h)	210 x 160 x 90 mm
Weight including power supply	~1.25 kg
Supply voltage	12 VDC
Maximum current rating	3 A
Maximum power rating	36 W
Electrical Class	Class II
Isolation	Type B
Ultrasound head dimensions (w x d x h)	52 x 110 x 72 mm
Ultrasound head weight	~0.21 kg
Battery	Internal rechargeable Li-on battery pack 7.4 V 5200 mAh
Mains voltage	100 - 240 V, 50-60 Hz
Current rating	1.0 A – 0.5 A Maximum
Operation mode	Suited for normal operation
Warranty	2 years on device, 1 year on heads, 6 months battery
Legislative conformity	(MDR 2017/745)



Ultrasound specifications

Ultrasound	Multifrequency heads 1 & 3 MHz
Models	Small and Large
Modes	Continuous and pulsed
Duty cycles	10%, 20%, 30%, 40%, 50%, 80%, 100%
Pulse frequencies	16 Hz, 48 Hz and 100Hz
Ultrasound peak Power Intensity	0 - 2.0 W/cm ² in continuous modes (=100%) 0 - 3.0 W/cm ² in pulsed modes ≤ 50 % 0 - 2.5 W/cm ² in pulsed modes =80%
Low Intensity Ultrasound	0 - 0.5 W/cm ² in pulsed modes ≤ 50 %
Treatment time	0 – 30 minutes
Ultrasound head connections	2
EVDB-protocols	23 applications 16 objectives 4 default
Free memory	100 pcs
Visual, acoustic	Via LED or audio, message on LCD
Correct therapy performance monitored	Ultrasound head contact to patient, DynamUS on all US heads

This is a medical device and it applies with all applicable medical regulations under MDR. For more details see product datasheet @ www.gymna.com.



Treatment Tables

Shockwave Therapy

Electrolysis

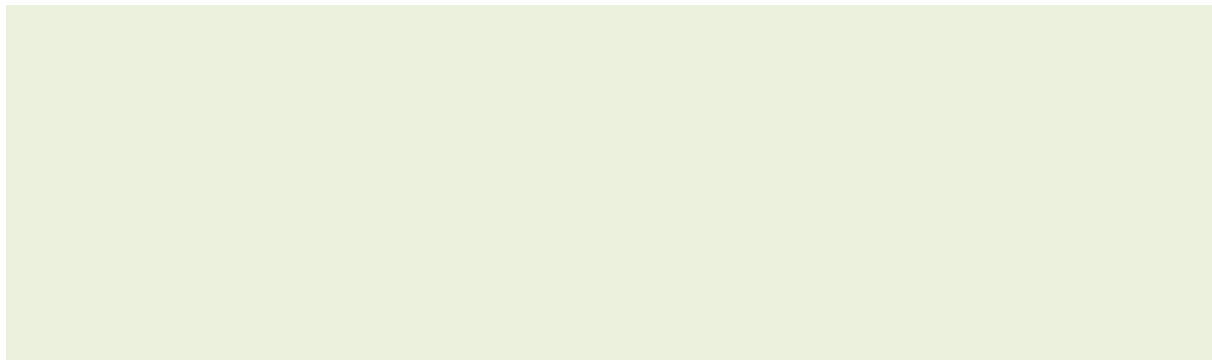
Cooling application

Tecar - Diathermy

Active Motion

Physio Care

Your dealer



gymna.com

gymna[®]

GymnaUniphy NV Pasweg 6A | B-3740 Bilzen, Belgium

Tel: +32 (0)89 510 532