

Product datasheet

G2 Traction

Special treatment couch for lumbar and cervical traction therapy with a traction device. The large sliding cushion eliminates friction between the patient and the couch surface, resulting in an efficient and comfortable treatment. The support surface can also easily be fixed in a stationary position, so that the couch can be used for other purposes as well.

Standard features

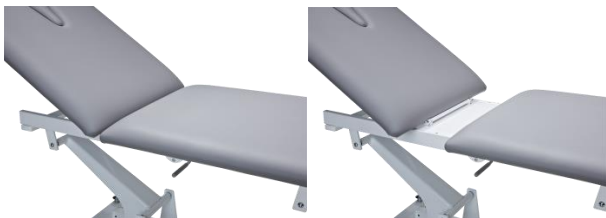
- Sliding cushion with 15 cm movement
- Adjustable back section supported by gas spring
- Electric height adjustment with foot switch
- Cushions with 40 mm padding, 40 kg/m³
- 15 cm clearance underneath frame for use with patient hoist (not compatible with 150 007)
- Non slip feet
- Cushions in a choice of 11 colours

Ordering data

160 110 G2 Traction

Optional

- 150 029 G2 Hand control
- 150 007 G2 Peripheral switch
- 150 001 G2 Hydraulic
- 150 062 G2 Wheel mechanism
- 150 003 G2 Cushion with face opening
- 150 004 G2 Cushions in non-standard colour



Sliding cushion to eliminate friction during traction therapy.

Accessories

- 160985 Traction device EverTrac ET-800
- 160 996 G2 Traction frame for traction device
- 100 476 Hip belt
- 100 477 Chest belt
- 110 487 2-section flexion stool
- 100 457 Neck harness according to Glisson
- 100 458 spreader bar
- 100 459 Pads for neck harness
- 332 915 Foot end protector for cushion
- xxx xxx Terry-cloth cover, stretch material (available in 9 colours 'Style')

Specifications

- Length x width: ± 205 x 67cm
- Height adjustment: ± 47 – 100 cm
- Weight: ± 85 kg
- Max. lifting capacity: 200 kg
- Electric motor: 6.000 N
- Hydraulic pump: 10.000 N
- Power supply: 230 VAC, 50-60 Hz, 1,0 A
120 VAC, 60 Hz, 1,7 A
- Insulation class: II
- Moister resistance: IP 21
- Classification: I
- Conformity: IEC/EN 60601-1
IEC/EN 60601-2
MDD 93/42/EEC
- Guarantee: 3 years (upholstery 1 year)



G2 Traction



G2 Traction shown with:

- Footswitch - standard
- Wheel mechanism - option
- Cushion with face opening - option
- AutoTrac 460 - accessory
- Attachment frame - accessory

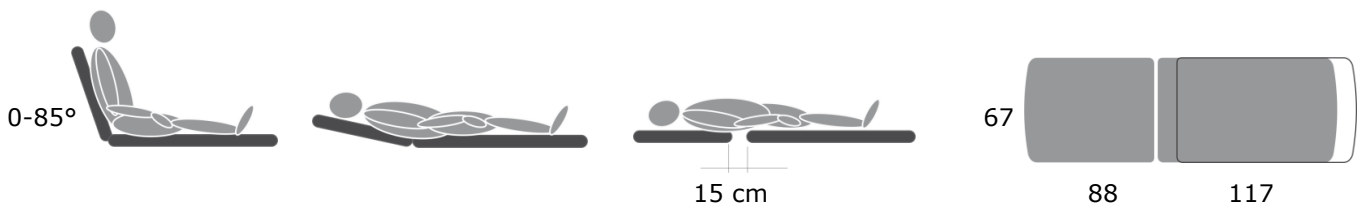


Lumbar traction (sliding cushion)



Cervical traction (cushion fixed)

Functionality/dimensions



Cushion colours

Style



Fashion

